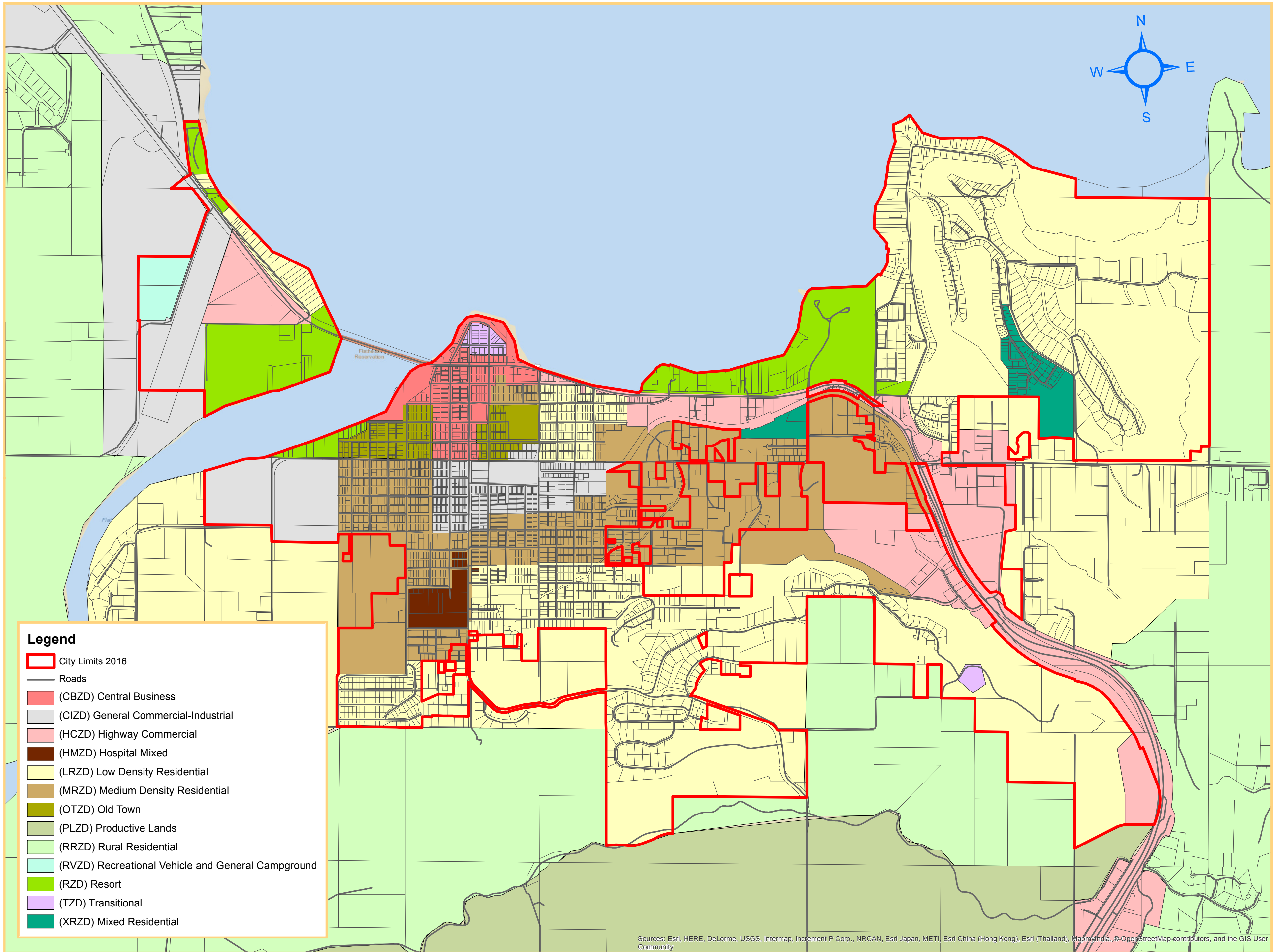


# Polson Growth Policy 2016 | Current Land Use Map

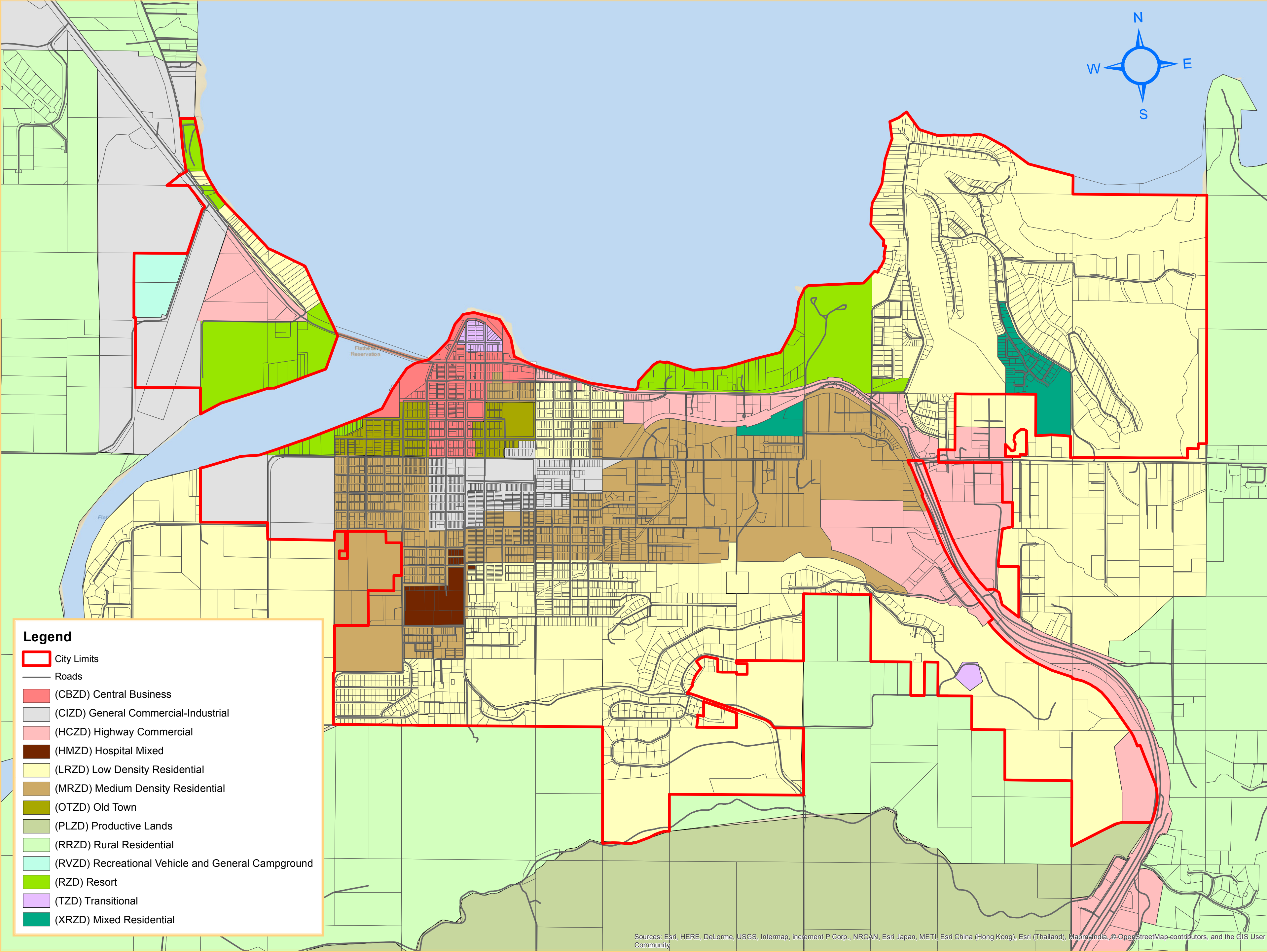


Sources: Esri, HERE, DeLorme, USGS, Intermap, increment P Corp., NRCAN, Esri Japan, METI, Esri China (Hong Kong), Esri (Thailand), MapmyIndia, © OpenStreetMap contributors, and the GIS User Community

The maps and map data are provided "as-is" and are not legal surveys or legal descriptions. The City of Polson, MT explicitly disclaims any representations and warranties as to the accuracy, timeliness, or completeness of maps and data. These maps and data are created from multiple city, county, state and federal sources. The source data may contain errors. These maps and data should not be used for navigational, tracking, or any other purpose requiring exacting measurement of distance or direction. In no event will the City of Polson, MT or its officers or employees be liable for any losses or damages that might arise from the use of the maps and data. The City of Polson shall assume no liability for any decisions made, or actions taken, or not taken by the user of the maps and data.

0 0.175 0.35 0.7 1.05 1.4 Miles

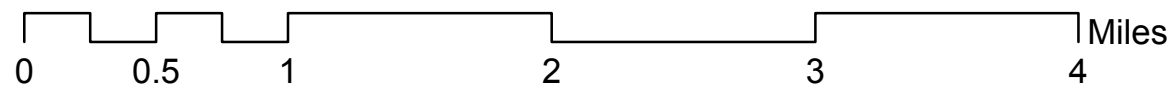
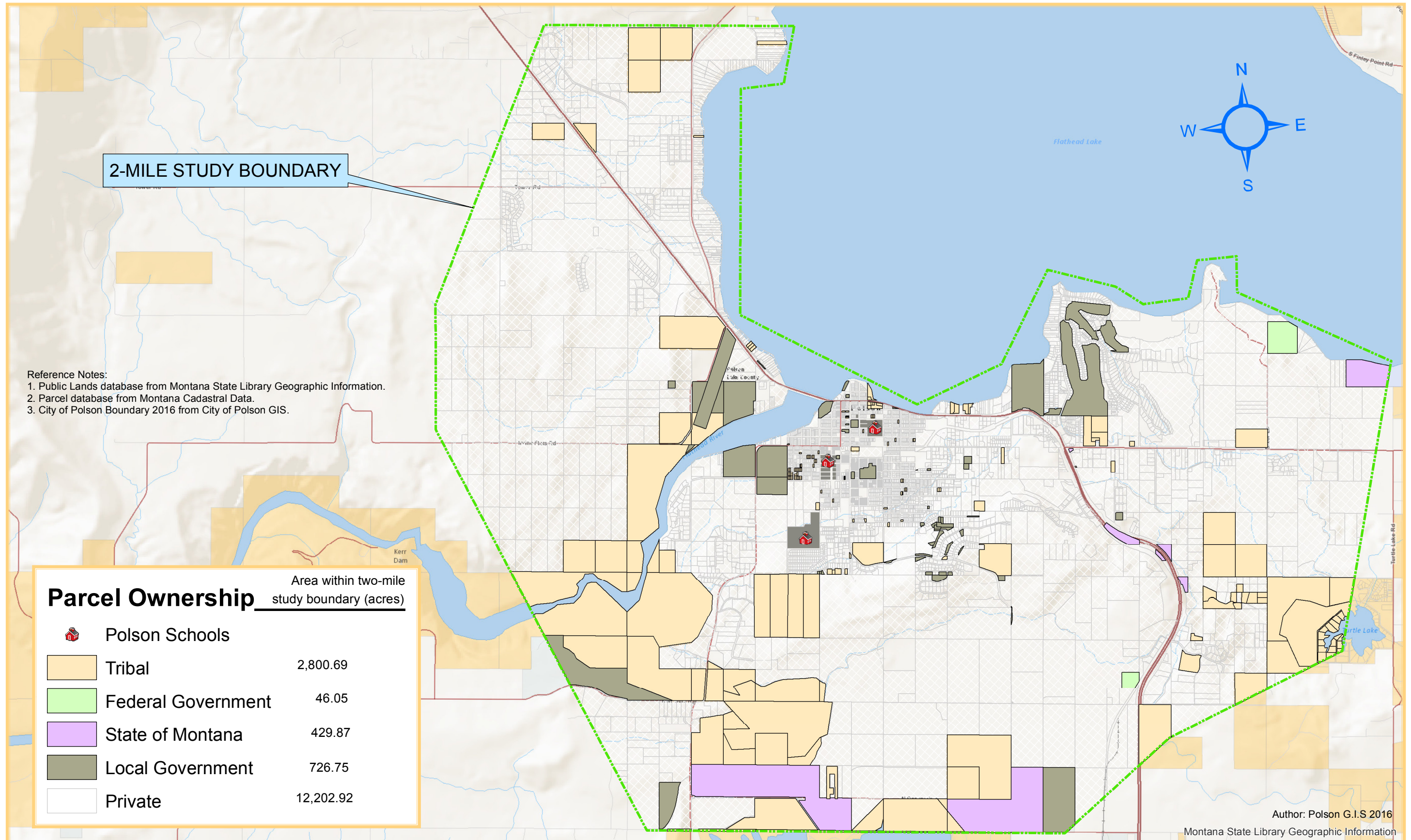
# Polson Growth Policy 2016 | Future Land Use Map



0 0.175 0.35 0.7 1.05 1.4 Miles

The maps and map data are provided "as-is" and are not legal surveys or legal descriptions. The City of Polson, MT explicitly disclaims any representations and warranties as to the accuracy, timeliness, or completeness of maps and data. These maps and data are created from multiple city, county, state and federal sources. The source data may contain errors. These maps and data should not be used for navigational, tracking, or any other purpose requiring exacting measurement of distance or direction. In no event will the City of Polson, MT or its officers or employees be liable for any losses or damages that might arise from the use of the maps and data. The City of Polson shall assume no liability for any decisions made, or actions taken, or not taken by the user of the maps and data.

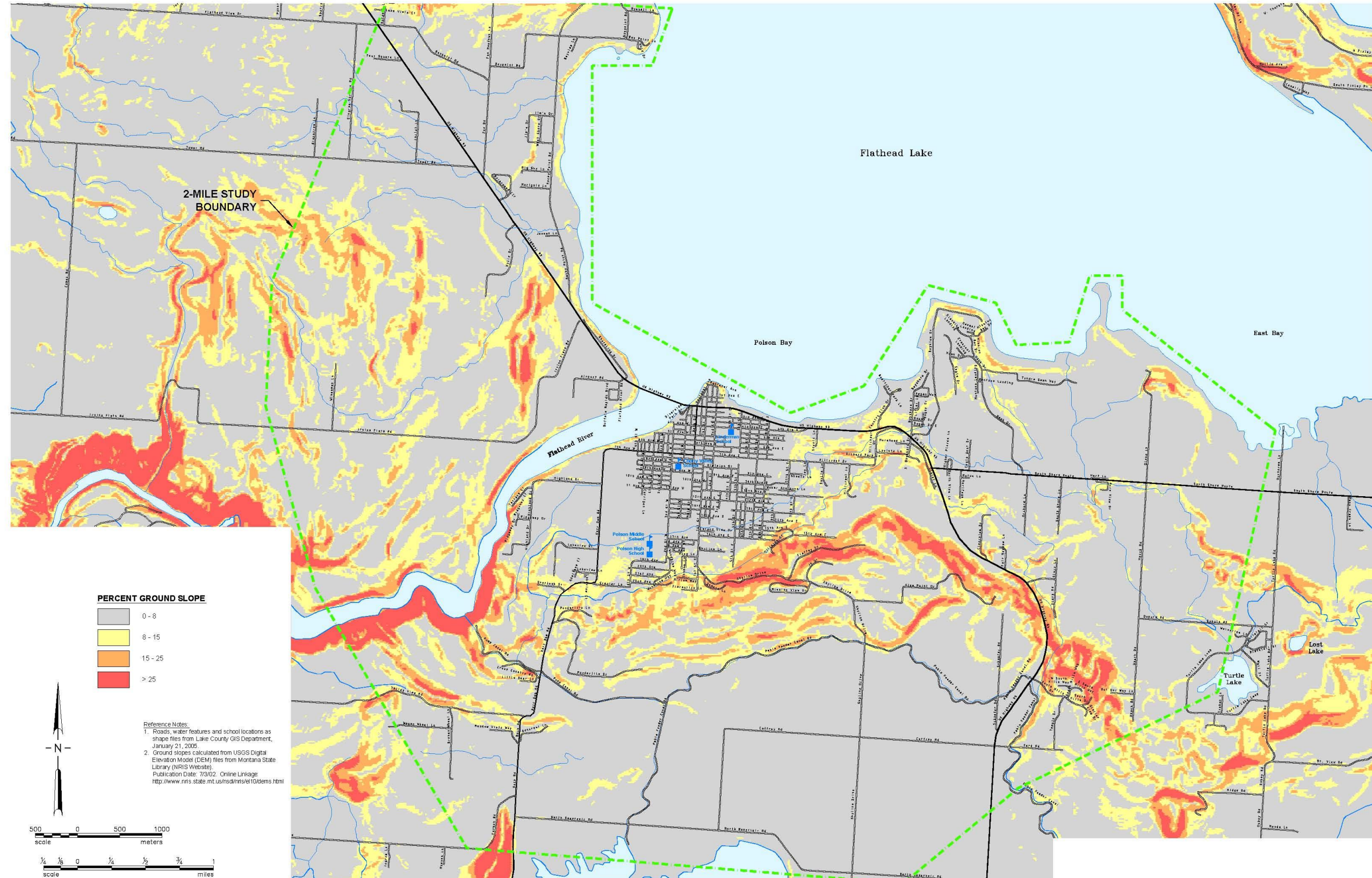
# Polson Growth Policy 2016 | Land Ownership



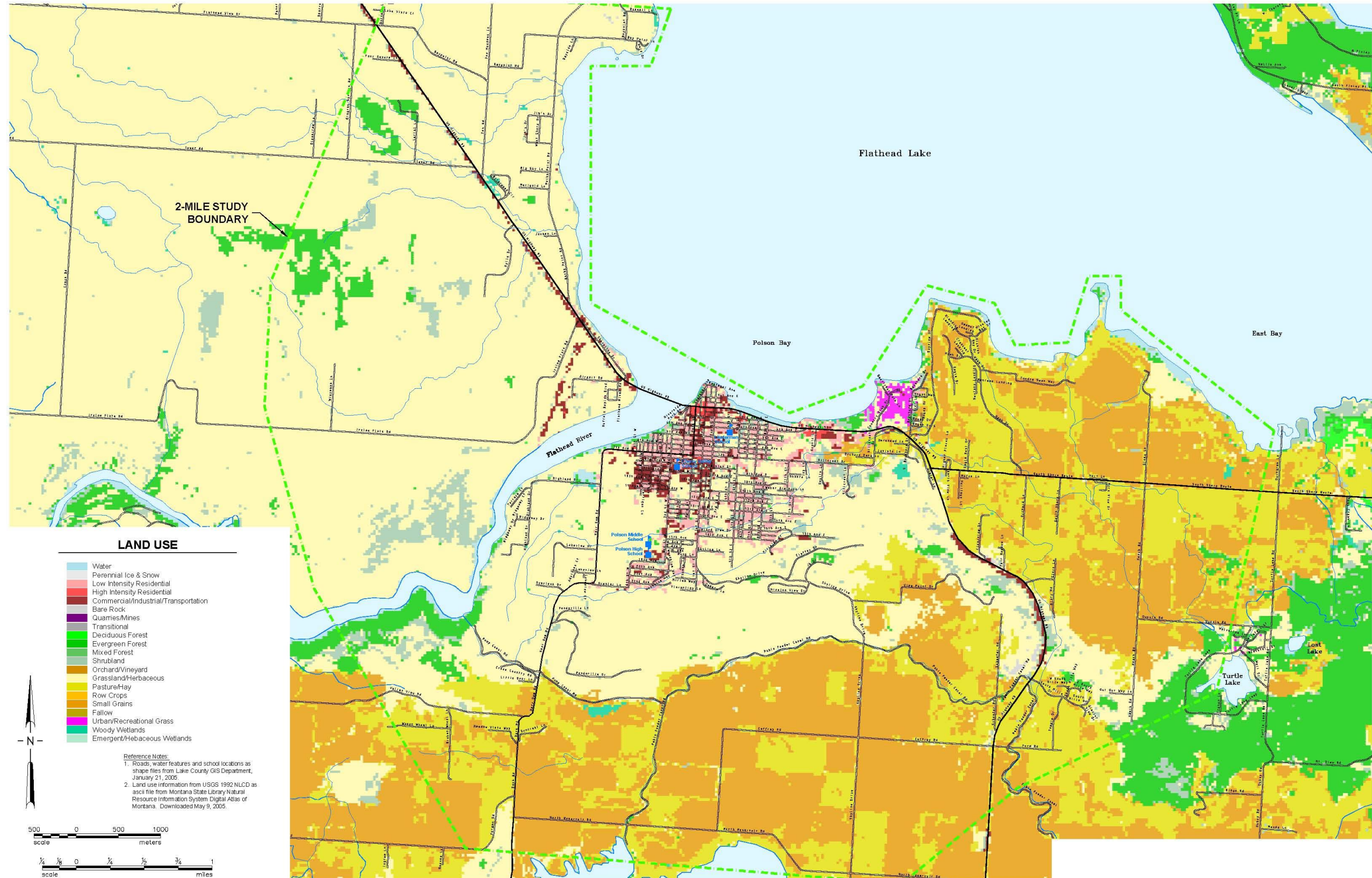
The maps and map data are provided "as-is" and are not legal surveys or legal descriptions. The City of Polson, MT explicitly disclaims any representations and warranties as to the accuracy, timeliness, or completeness of maps and data. These maps and data are created from multiple city, county, state and federal sources. The source data may contain errors.

These maps and data should not be used for navigational, tracking, or any other purpose requiring exacting measurement of distance or direction. In no event will the City of Polson, MT or its officers or employees be liable for any losses or damages that might arise from the use of the maps and data. The City of Polson shall assume no liability for any decisions made, or actions taken, or not taken by the user of the maps and data.

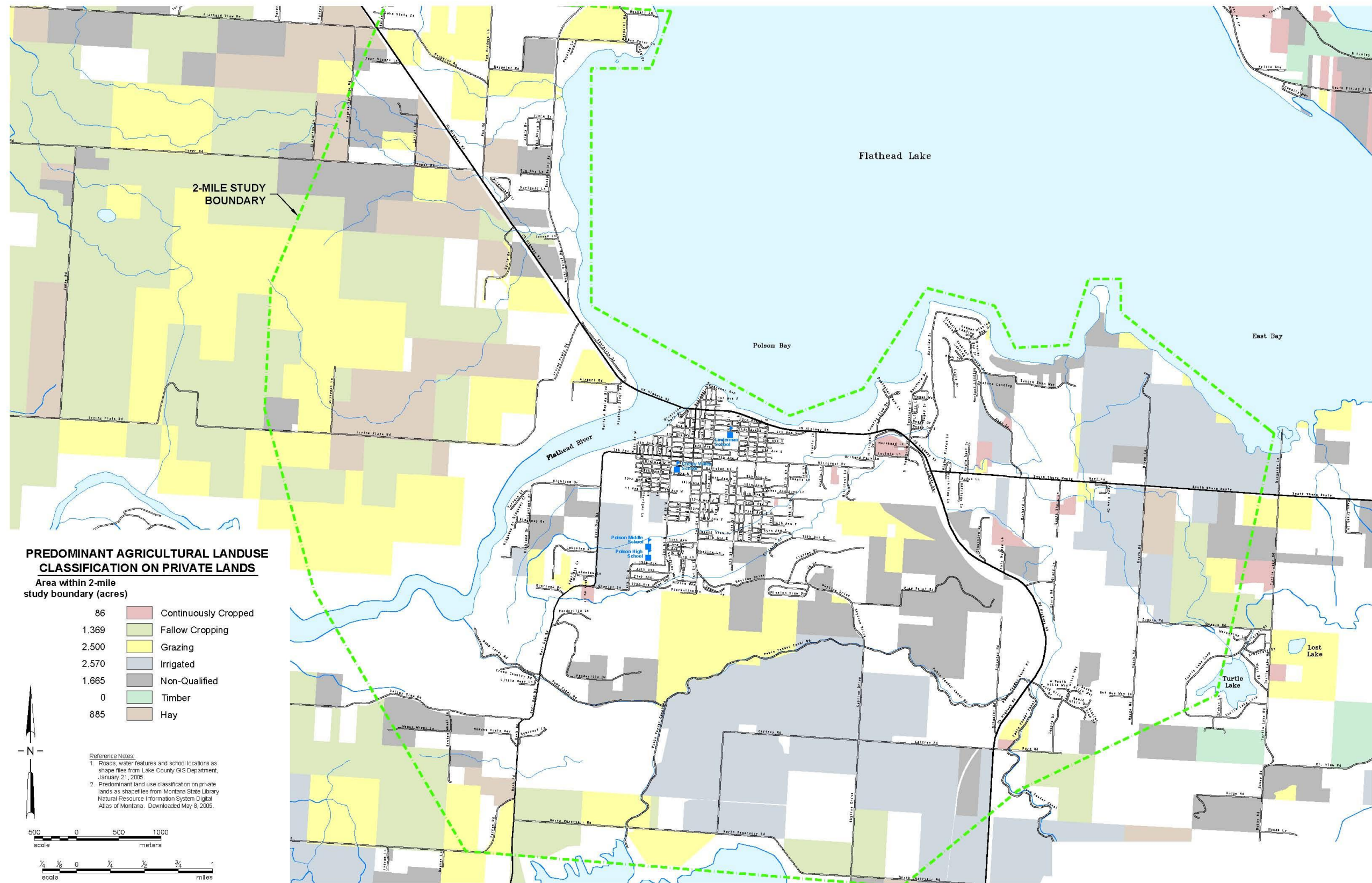
# Polson Growth Policy 2016 | Land Slope



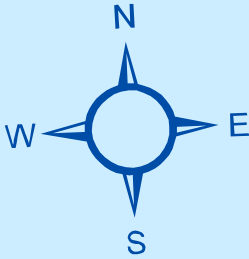
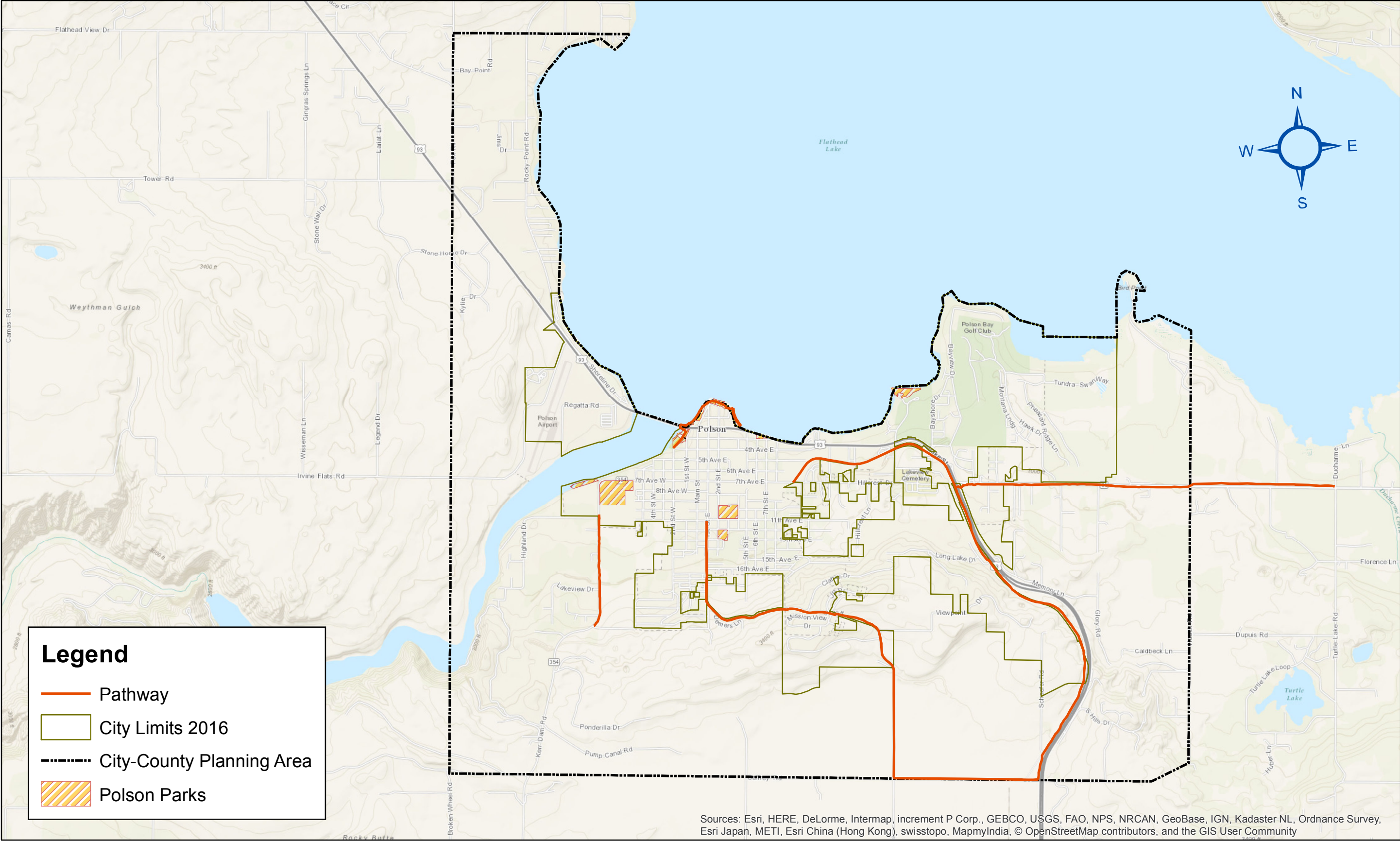
# Polson Growth Policy 2016 | Land Use



# Polson Growth Policy 2016 | Parcel Agricultural Use



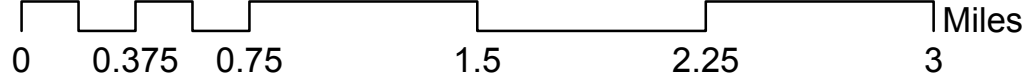
# Polson Growth Policy 2016 | Pathway System



**Legend**

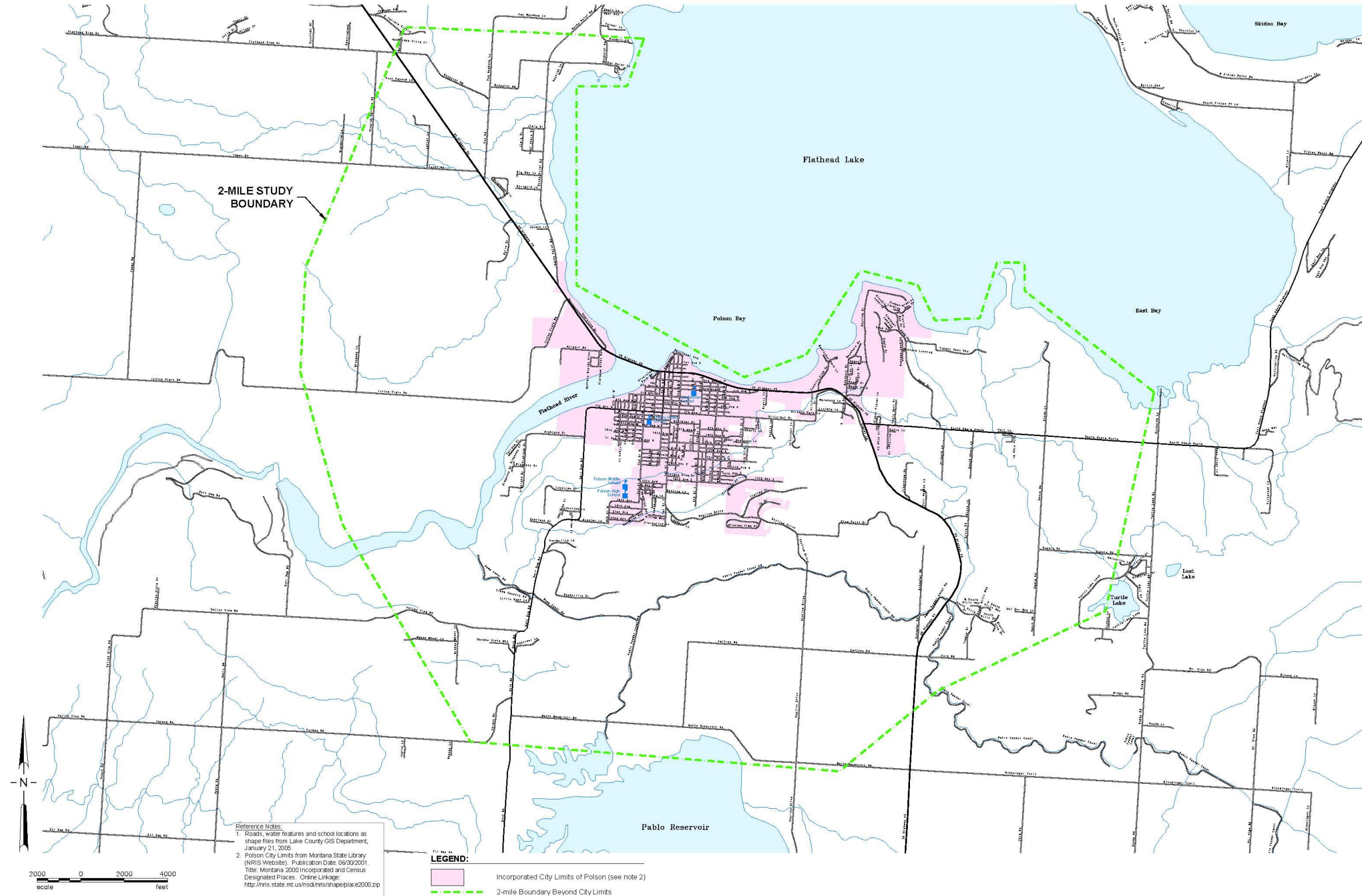
- Pathway
- City Limits 2016
- City-County Planning Area
- Polson Parks

Sources: Esri, HERE, DeLorme, Intermap, increment P Corp., GEBCO, USGS, FAO, NPS, NRCAN, GeoBase, IGN, Kadaster NL, Ordnance Survey, Esri Japan, METI, Esri China (Hong Kong), swisstopo, MapmyIndia, © OpenStreetMap contributors, and the GIS User Community



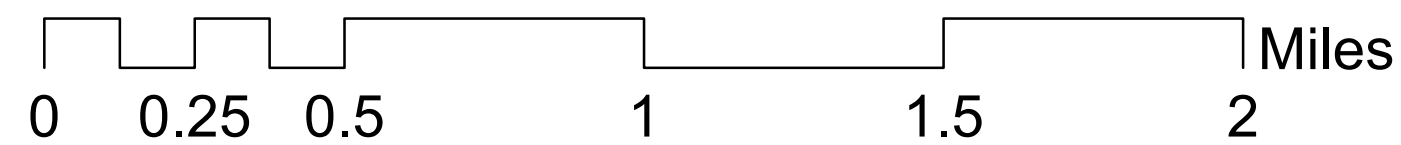
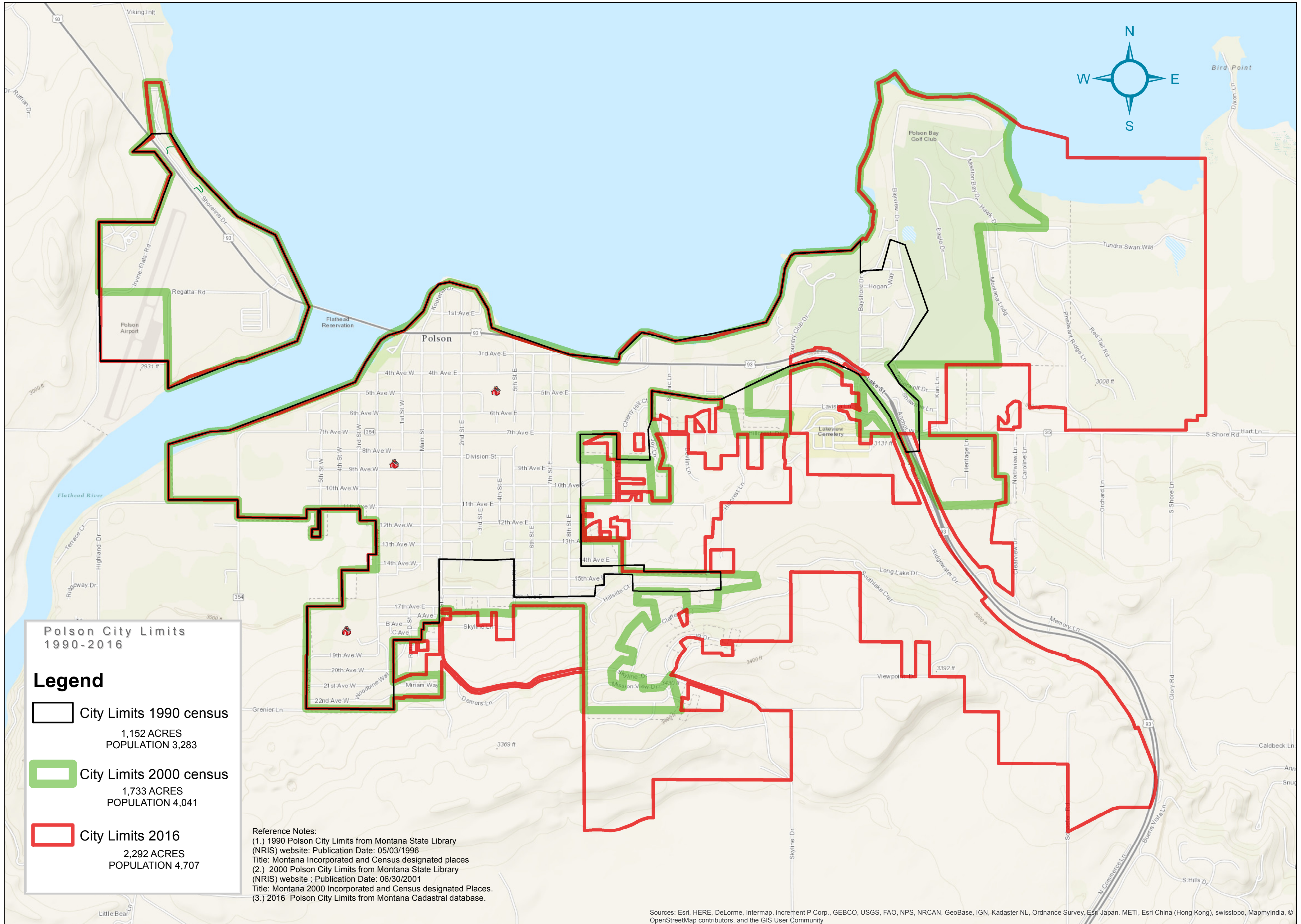
The maps and map data are provided "as-is" and are not legal surveys or legal descriptions. The City of Polson, MT explicitly disclaims any representations and warranties as to the accuracy, timeliness, or completeness of maps and data. These maps and data are created from multiple city, county, state and federal sources. The source data may contain errors. These maps and data should not be used for navigational, tracking, or any other purpose requiring exacting measurement of distance or direction. In no event will the City of Polson, MT or its officers or employees be liable for any losses or damages that might arise from the use of the maps and data. The City of Polson shall assume no liability for any decisions made, or actions taken, or not taken by the user of the maps and data.

# Polson Growth Policy 2016 | Planning Area Base Map



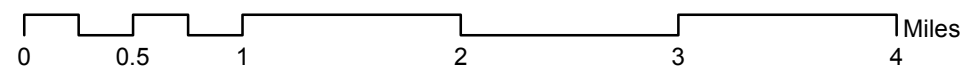
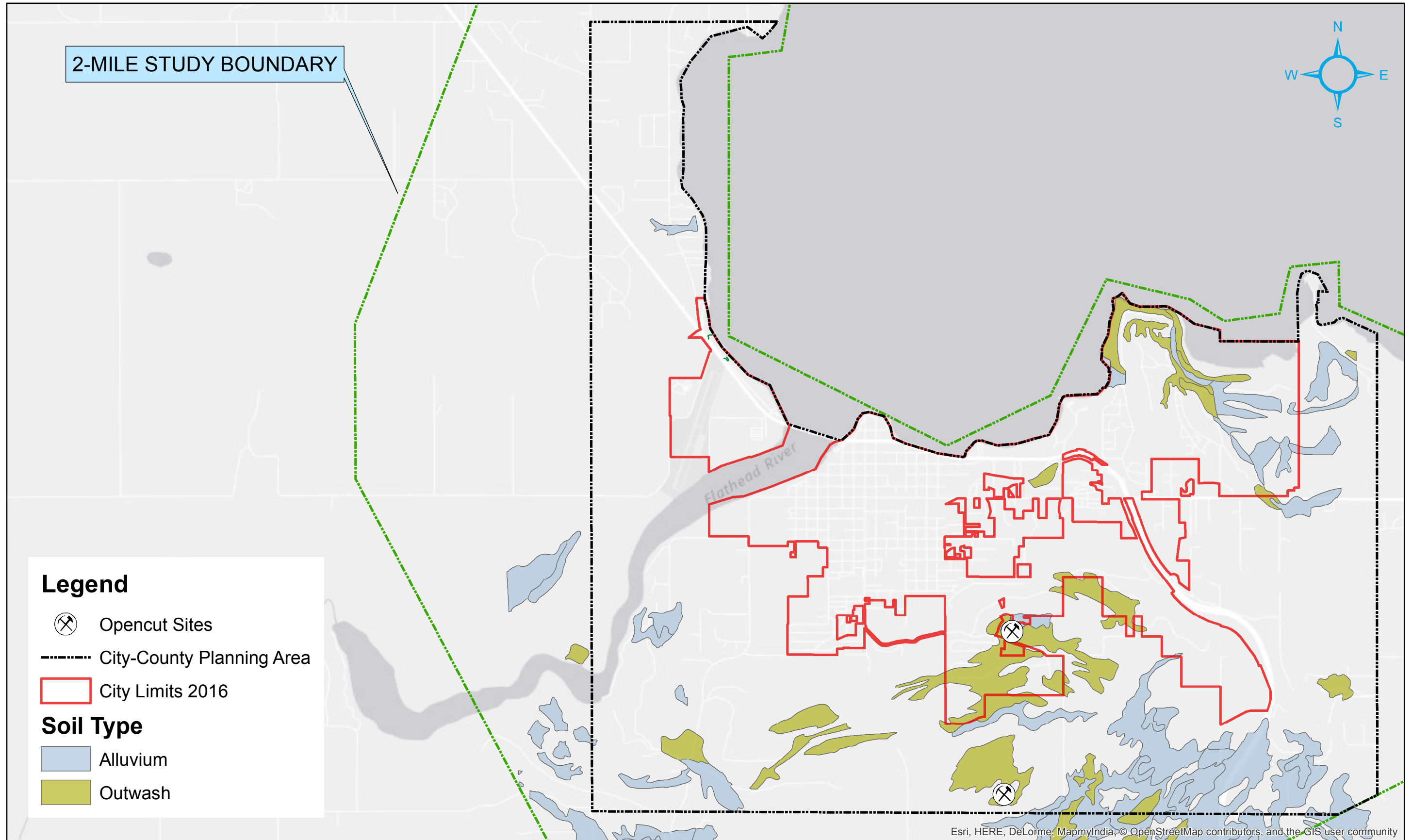


# Polson Growth Policy 2016 | Polson City Limits



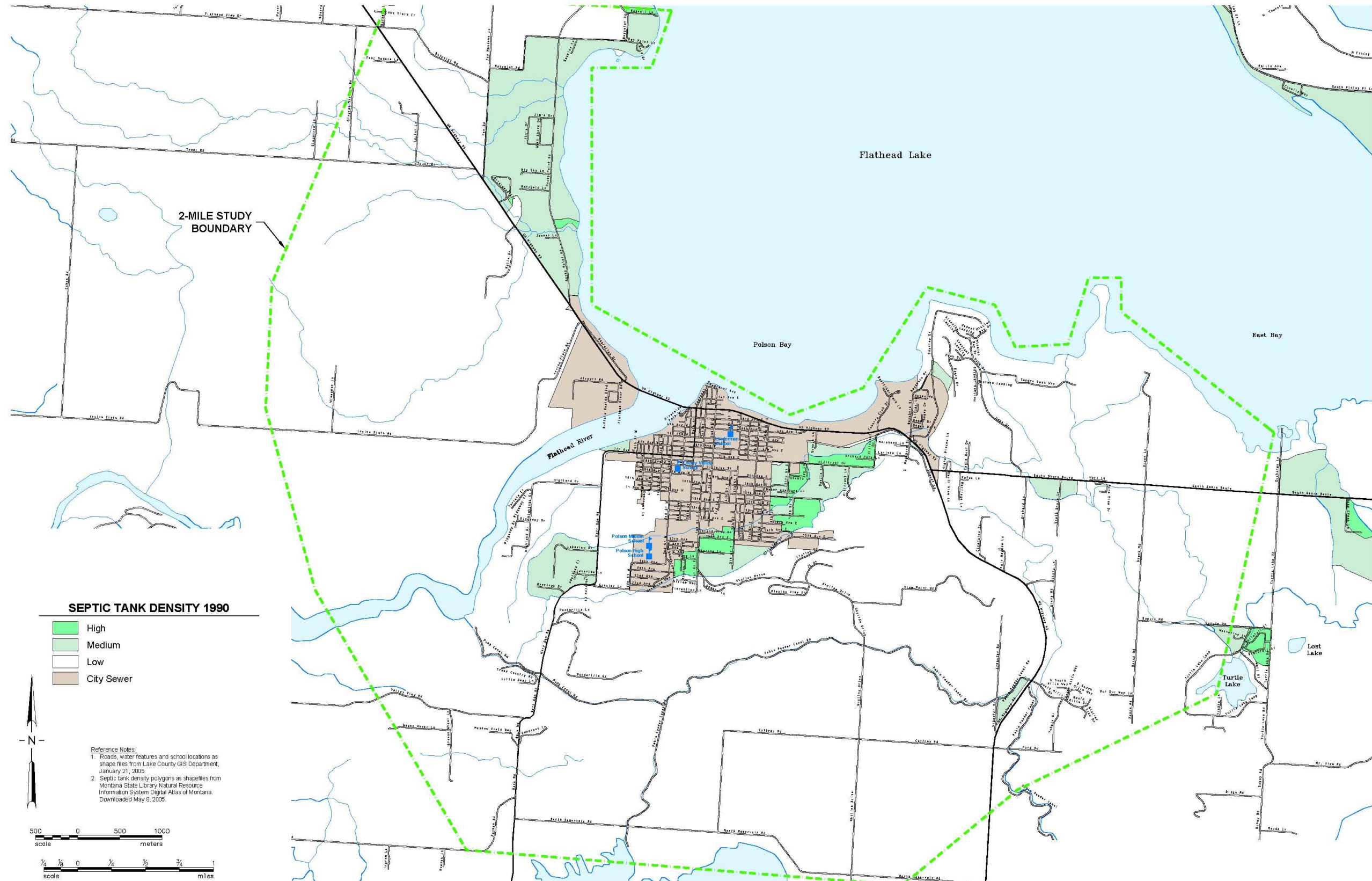
The maps and map data are provided "as-is" and are not legal surveys or legal descriptions. The City of Polson, MT explicitly disclaims any representations and warranties as to the accuracy, timeliness, or completeness of maps and data. These maps and data are created from multiple city, county, state and federal sources. The source data may contain errors. These maps and data should not be used for navigational, tracking, or any other purpose requiring exacting measurement of distance or direction. In no event will the City of Polson, MT or its officers or employees be liable for any losses or damages that might arise from the use of the maps and data. The City of Polson shall assume no liability for any decisions made, or actions taken, or not taken by the user of the maps and data.

# Polson Growth Policy 2016 | Sand and Gravel Resources

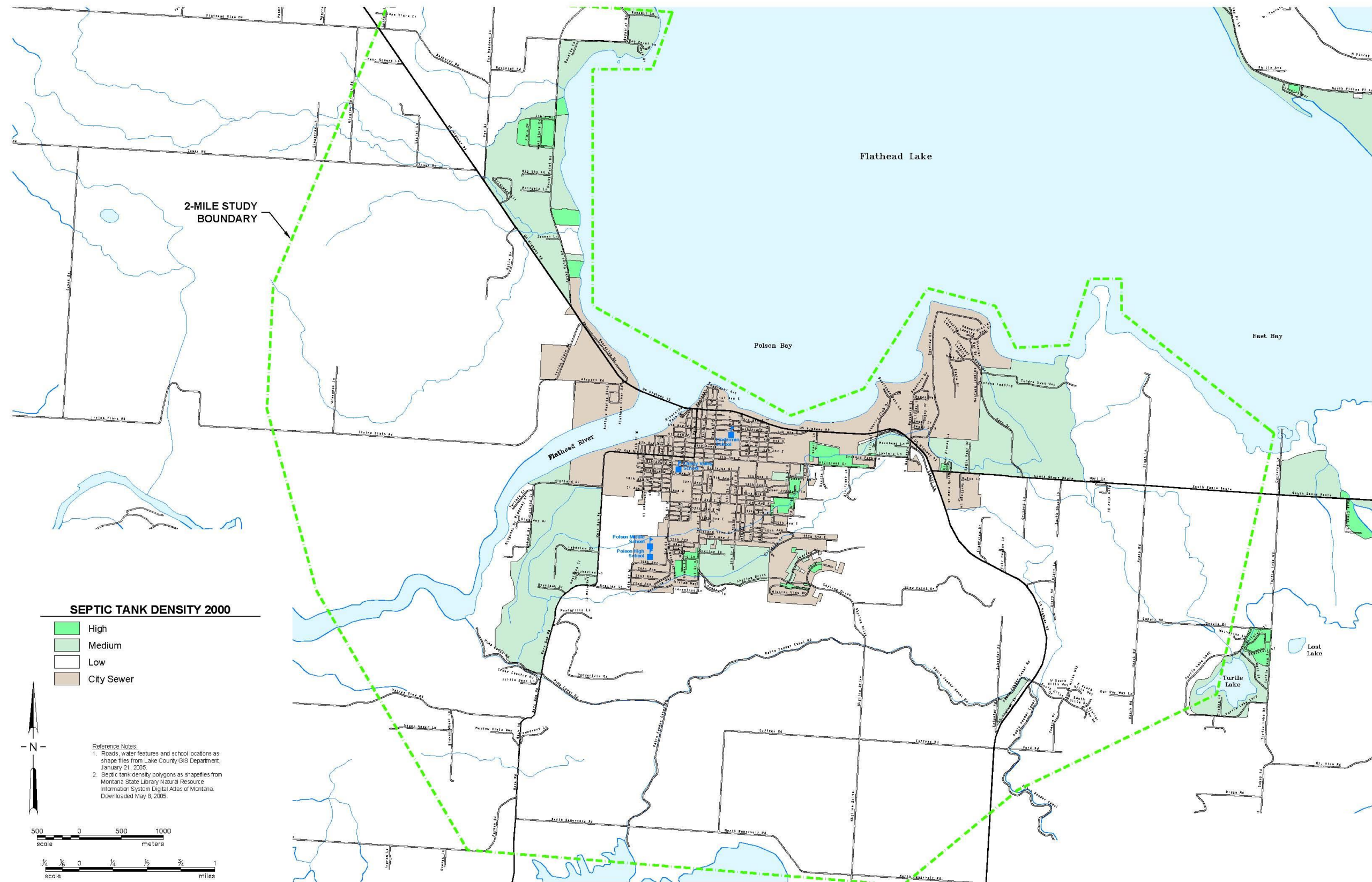


The maps and map data are provided "as-is" and are not legal surveys or legal descriptions. The City of Polson, MT explicitly disclaims any representations and warranties as to the accuracy, timeliness, or completeness of maps and data. These maps and data are created from multiple city, county, state and federal sources. The source data may contain errors. These maps and data should not be used for navigational, tracking, or any other purpose requiring exacting measurement of distance or direction. In no event will the City of Polson, MT or its officers or employees be liable for any losses or damages that might arise from the use of the maps and data. The City of Polson shall assume no liability for any decisions made, or actions taken, or not taken by the user of the maps and data.

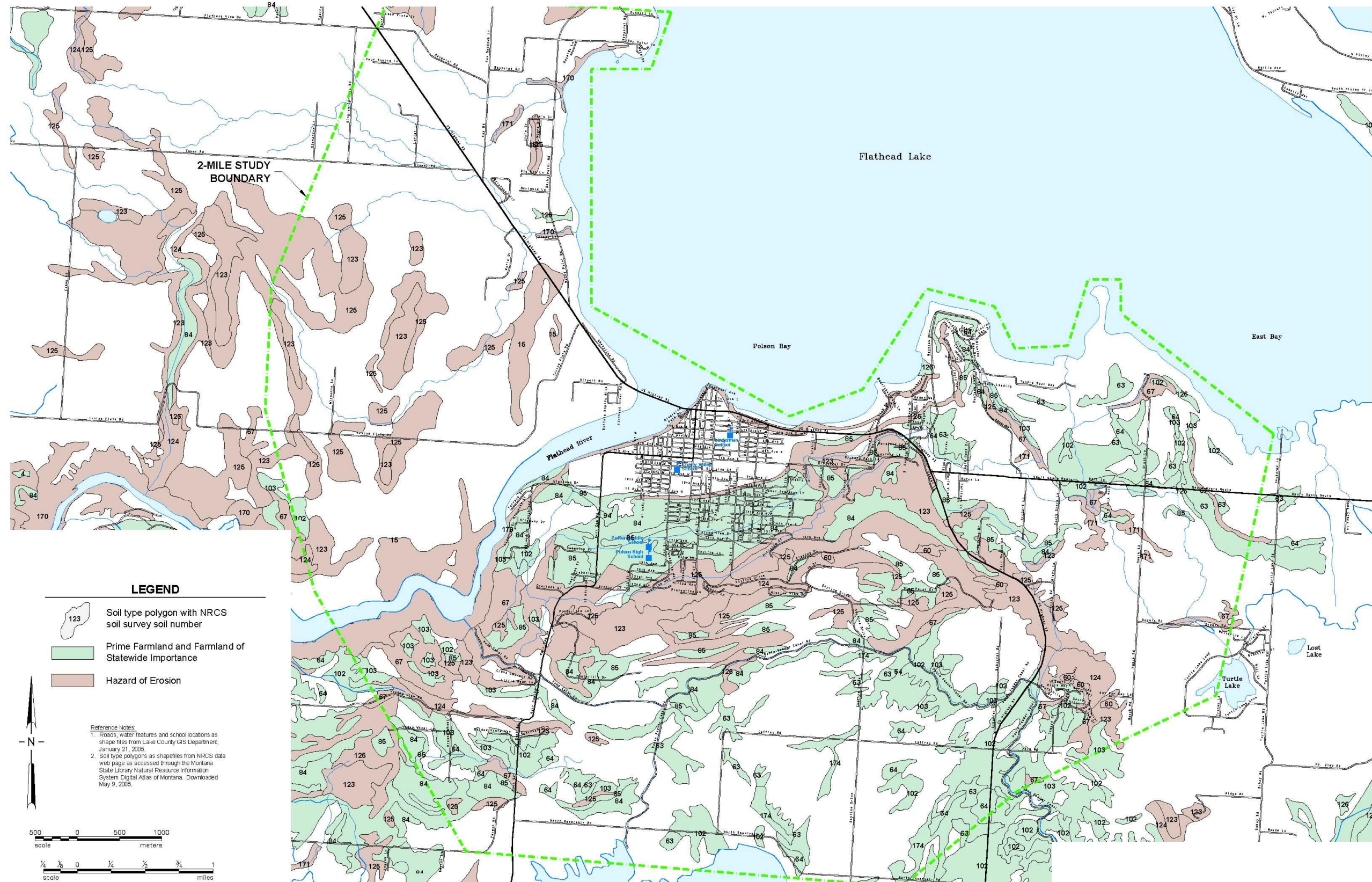
# Polson Growth Policy 2016 | Septic Tank Density, 1990



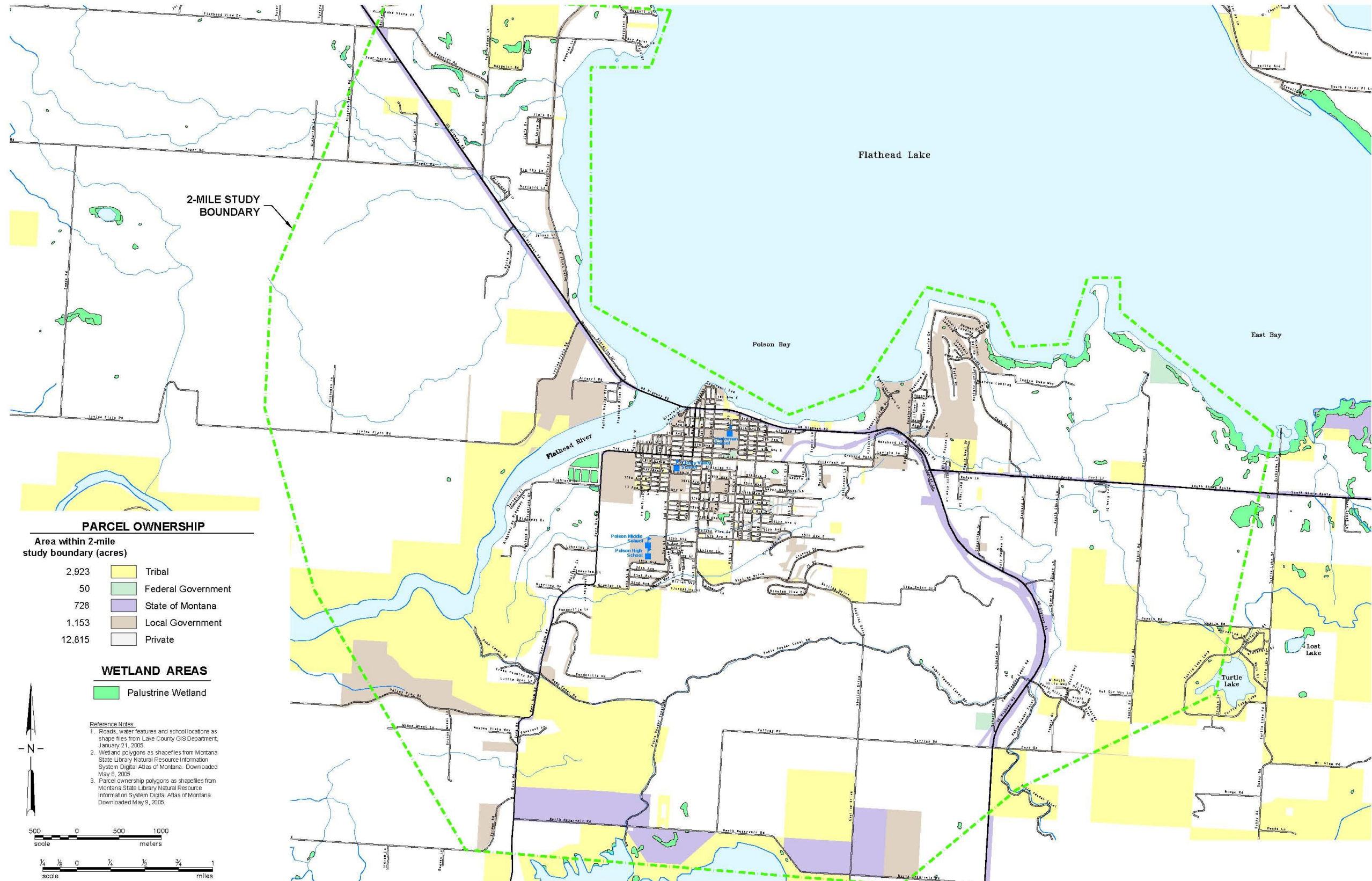
# Polson Growth Policy 2016 | Septic Tank Density, 2000



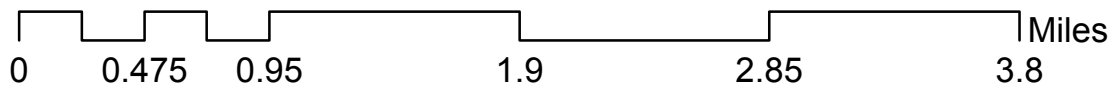
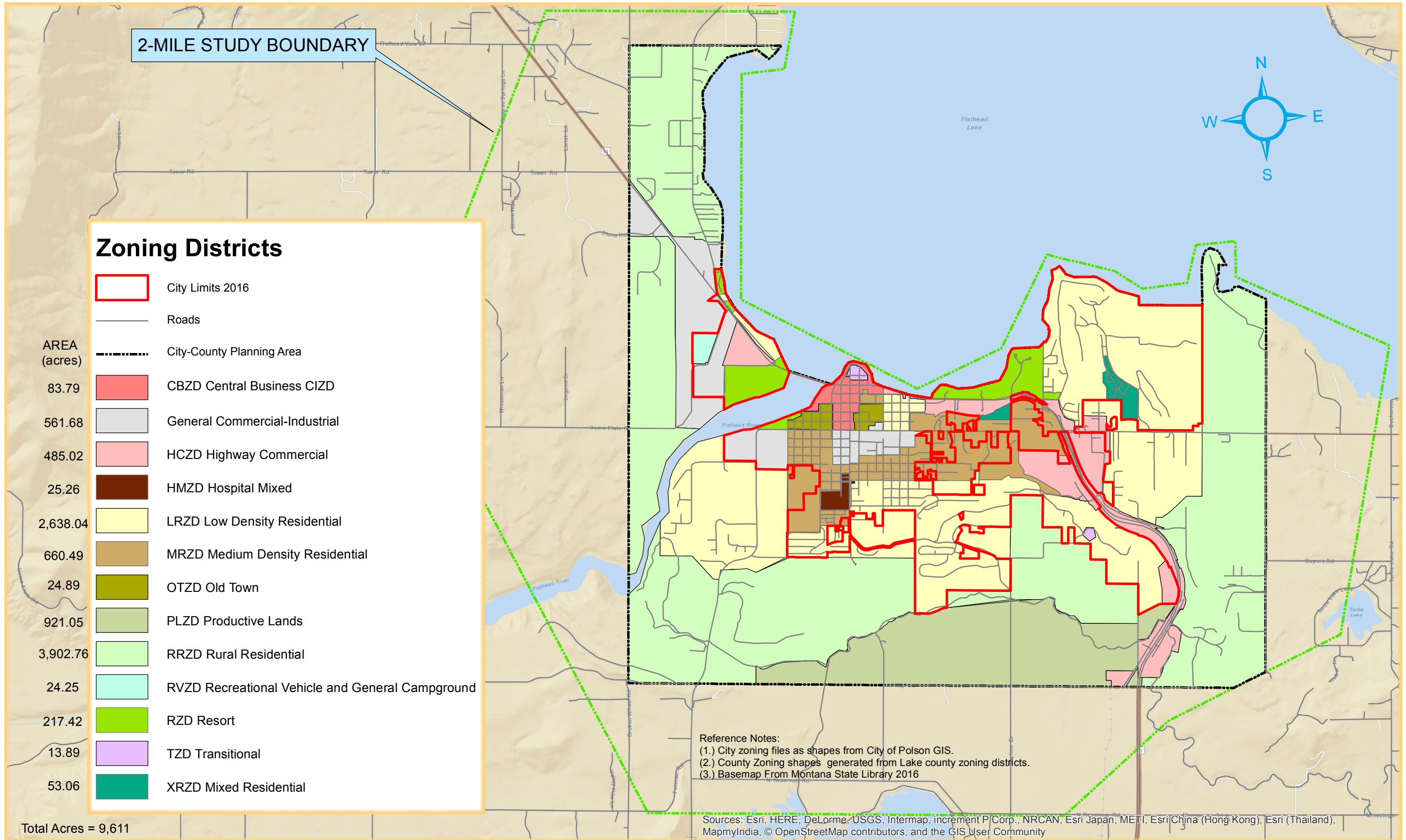
# Polson Growth Policy 2016 | Soils



# Polson Growth Policy 2016 | Wetlands



# Polson Growth Policy 2016 | Zoning Districts



Author: Polson G.I.S 2016

The maps and map data are provided "as-is" and are not legal surveys or legal descriptions. The City of Polson, MT explicitly disclaims any representations and warranties as to the accuracy, timeliness, or completeness of maps and data. These maps and data are created from multiple city, county, state and federal sources. The source data may contain errors.

These maps and data should not be used for navigational, tracking, or any other purpose requiring exacting measurement of distance or direction.

In no event will the City of Polson, MT or its officers or employees be liable for any losses or damages that might arise from the use of the maps and data. The City of Polson shall assume no liability for any decisions made, or actions taken, or not taken by the user of the maps and data.